

THE X4000BE TRAILER

PRODUCT GUIDE

Reporting

Coverage

Power

Durability

Reliable Asset Monitoring and Equipment Tracking.

Trailers, whether tethered or untethered become targets for those wanting the high value content inside. Bahamas Asset Tracking provides peace of mind when tracking your trailers with the top notch asset monitoring of the X4000BE Trailer.

Developed to protect trailers and heavy equipment in the construction and services industry, the X4000BE Trailer features GPS data and cellular coverage under the GSM/GPRS network, provides a weather proof external enclosure with internal back-up battery, motion sensor detection and one input and one output for power take offs or starter disable.

Actionable data, such as the location of a trailer or heavy equipment, means the difference between spending or saving thousands in replacing stolen assets and repairing damaged inventory.

Backed by a dedicated, on-site customer and technical support staff, Bahamas Asset Tracking is ready to help your company reap the benefits of reliable asset tracking and monitoring to begin saving money today.

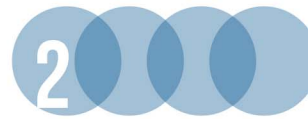


Key Features

The X4000BE Trailer is a cost effective, state-of-the-art hardware and software solution with features designed to encourage business growth by increasing company asset monitoring and protection.

- Real-time Tracking and Reports
- Coverage and Communication
- Power and Durability





Real Time TRACKING + REPORTS

with the X4000BE Trailer

Actionable Insight Leads to Improved Asset Monitoring and Vehicle Location

Access to real-time data for a trailer of high value content is priceless. Asset monitoring with a GPS tracking solution from Bahamas Asset Tracking combines innovative hardware and software to create the reports that matter most to your business.

A heavy equipment tracking and reporting solution such as the X4000BE Trailer will help to improve asset monitoring and vehicle location, while organizing operations and streamlining your companies asset management needs.

- Quick Reports Configuration Feature
- Daily Detail
- Stops
- Report Icons Hyperlink to Map Info
- Color Coded Vehicle Status
- Geofences - Polygon Style for Customized Fences - 3 Per Unit
- Real-Time Geofencing Alerts
- Unauthorized Movements
- After Hours
- History Stored from Life of Install; Indefinitely - Not 'Archived'
- Fastest Web-Interface Speed in the Industry
- Free Training and Tech Support
- Software Engineers are all in house

Vehicle History

Step 1: Choose Vehicle

Tom's Car

Detailed Report

Step 2: Choose Date Range

Start Date04/11/2010

End Date06/10/2010

Step 3: Generate

Detailed Report

Vehicle: Tom's Car

Date Time	Event	Address
04/13/2010 05:54 PM	Locate	[ca79] 42164 Roick Dr, CA, Temecula, US, 92
04/14/2010 04:32 PM	Starter Event	[ca79] 42162 Roick Dr, CA, Temecula, US, 92
04/21/2010 03:35 PM.	Ignition On	No GPS fix
04/21/2010 03:36 PM.	Locate	[ca79] No GPS fix
04/21/2010 03:37 PM.	Drive	No GPS fix
04/21/2010 03:40 PM	Drive	42164 Roick Dr, CA, Temecula, US, 92590
04/21/2010 03:43 PM	Drive	42166 Roick Dr, CA, Temecula, US, 92590
04/21/2010 03:46 PM	Drive	42166 Roick Dr, CA, Temecula, US, 92590
04/21/2010 03:48 PM	Starter Event	[ca79] 42174 Roick Dr, CA, Temecula, US, 92

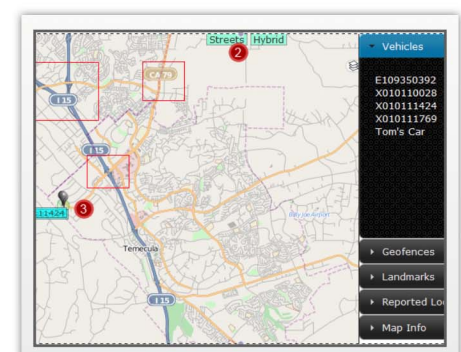
Your Vehicle(s) Last Known Location

'Locates' Store

Hybrid Store

Group: Main

Label	Status
4 Runner	Ignition Off 06/17/2010 09:17
Land Cruiser	Locate 06/16/2010 04:02



Advanced OPERATIONS + PERFORMANCE

with the X4000BE Trailer



Real-Time Tracking and Reports

- Instant Remote Access
- Real-Time Power Sport tracking
- Ping on Demand
- *Motion Sensor
- *1 Output/1 Input



Coverage and Communication

- GSM Nationwide Coverage
- Instant Alerts Via Text or Email
- 99.99% Network Up Time



Power and Durability

- Self Contained
- Weather Resistant
- Internal Back-Up Battery
- Low Battery Draw

Questions? Need Answers? Call Us
242-328-8431

**Items are options and may incur additional fees.*

