

# THE C4000B PRODUCT GUIDE



## Reliable Equipment Monitoring and Asset Protection.

*It is estimated by the National Insurance Crime Bureau that, in the U.S., heavy equipment theft accounts for over \$1 billion in company losses annually.*

Designed using a GSM/GPRS modem with an internal antenna and backup battery to monitor main power disconnects and provide continuous tracking power, the C4000B is a small, simple, but powerful business solution.

The C4000B is a location-based vehicle tracking and asset protection device used in scheduling maintenance alerts, tracking engine hours, and for starting and disabling equipment located on-site.

Actionable data provided by the C4000B provides businesses with benefits to the bottom-line that are realized in both a savings in time, and money spent efficiently managing your company vehicles and equipment.



## Key Features

The C4000B was designed to provide efficient and accurate vehicle and equipment monitoring without additional personnel. This feature-smart, cutting-edge hardware and software option is a cost efficient solution for almost any business.

- Real-time Tracking, Reporting and Monitoring
- Ignition and Power
- Coverage and Communication





# Real Time TRACKING + REPORTS

with the C4000B



## Actionable Reports for Tracking, Monitoring, and Asset Protection

The C4000B GPS solution provides actionable data work site managers and business owners need to efficiently track and monitor vehicles, while providing asset protection for heavy equipment and roll-offs left on-site. If needed, reports and alerts may be customized specifically for your business needs.

- State Mileage
- Time Sheets for Trip Times
- Real-Time Vehicle Location
- Historical Movements of Vehicle
- Vehicle Maintenance Alerts and Reports
- Color Coded Vehicle Status
- Unlimited Landmarks
- Geofences - Square Customized Fences - 3 Per Unit
- Idling Times
- Real-Time Geofencing Alerts
- After Hours Vehicle Monitoring
- Speed Alerts and Reports
- History Stored from Life of Install; Indefinitely - Not 'Archived'
- Free Training and Tech Support
- Software Engineers are All In-House

### Monday, October 17, 2011

Event	Address	Time Date	Idle Time
Idle	201 Beatrice Ln, Talladega, AL	08:59 AM 10/17/2011	20 minutes, 21 seconds
Idle	1946 Stemley Bridge Rd, Talladega, AL	09:15 AM 10/17/2011	2 minutes, 39 seconds
Idle	, Lincoln, AL	09:40 AM 10/17/2011	5 minutes, 19 seconds
Idle	, Huntsville, AL	01:02 PM 10/17/2011	7 minutes, 51 seconds
Idle	, Huntsville, AL	03:54 PM 10/17/2011	10 minutes, 59 seconds
Idle	1862 Jordan Ln Nw, Huntsville, AL	04:18 PM 10/17/2011	2 minutes, 37 seconds
Idle	, Huntsville, AL	04:36 PM 10/17/2011	2 minutes, 8 seconds
Idle	, Huntsville, AL	05:15 PM 10/17/2011	3 minutes, 48 seconds
Idle	1947 Stemley Bridge Rd, Talladega, AL	07:30 PM 10/17/2011	7 minutes, 9 seconds

Total Idle Time: 1 hour, 5 minutes, 9 seconds

### Tuesday, October 18, 2011

Event	Address	Time Date	Idle Time
Idle	183 Beatrice Ln, Talladega, AL	09:06 AM 10/18/2011	27 minutes, 34 seconds
Idle	491 S Noble St, Anniston, AL	09:55 AM 10/18/2011	6 minutes, 51 seconds
Idle	, Scottsboro, AL	01:23 PM 10/18/2011	16 minutes, 59 seconds
Idle	1352 Old Water Works Rd Sw, Fort Payne, AL	05:12 PM 10/18/2011	38 minutes, 58 seconds

Total Idle Time: 1 hour, 32 minutes, 6 seconds

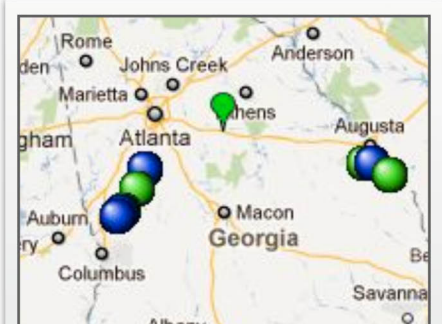
### Wednesday, October 19, 2011

Event	Address	Time Date	Idle Time
Idle	175 Beatrice Ln, Talladega, AL	08:04 AM 10/19/2011	6 minutes, 34 seconds
Idle	, Fairfield, AL	01:16 PM 10/19/2011	9 minutes, 37 seconds
Idle	2237 Bessemer Rd, Birmingham, AL	01:32 PM 10/19/2011	2 minutes, 57 seconds
Idle	4633 Avenue V, Birmingham, AL	01:57 PM 10/19/2011	20 minutes, 48 seconds
Idle	4658 Avenue W, Birmingham, AL	02:50 PM 10/19/2011	4 minutes, 51 seconds
Idle	4605 Avenue V, Birmingham, AL	03:04 PM 10/19/2011	3 minutes, 33 seconds

### Summary Report for: Truck 332 JOHJA

#### Totals:

Total Engine On	7 hours, 26 minutes, 27
Total Engine Off	5 hours, 6 minutes, 14 s
Total Travel Time	5 hours, 20 minutes, 22
Total Distance	261.54 miles
Total Idle Time	2 hours, 6 minutes, 5 se
Max Speed	75 mph
Avg Speed	49 mph



# Advanced OPERATIONS + PERFORMANCE

*with the C4000B*

3



## Real-Time Tracking and Reports

- Track Employee Off Hours Use
- Schedule Maintenance Alerts
- Tow Monitoring



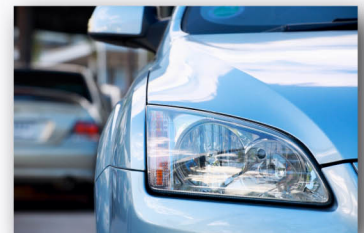
## Ignition and Power

- Ignition On/Off
- Starter Disable
- Power Take Off
- Internal Back-Up Battery



## Coverage and Communication

- National GSM coverage
- Instant Alerts Via Text or Email
- 99.99% Network Up Time



# C4000B

# TECHNICAL SPECIFICATIONS

*Call for More Information*

4



**CALL TODAY**

**242-328-8431**

## Frequency Band

- 850/900/1800/1900 MHz

## Transmit Power

- 2W @ 850/900 MHz
- 1W @ 1800/1900 MHz

## Status Indicators

- Network Registration/GPRS
- GPS Status

## GPS Specifications

- Receiver - 50 channels
- Receiver - tracking Sensitivity -160 dBm
- Accuracy - +/- 2.5m CEP

## Network Functionality

- Auto-Register to GPRS network
- GPRS Class B, Multi-Slot 10
- Supports SMS and UDP
- OTA Firmware Upgrade Using FTP
- SMS connectivity

## Power Requirements

- DC Power - 6 - 32V
- 70 mA active average
- Battery - 200 mAh

## Connectors

- Built-In 8-Wire Harness

## Mechanical

- Case Material - ABS Plastic
- Dimensions - 2.1" X 3.6" X 0.77"
- Weight - 3.7 oz.
- Operating Temperature - -30°C to +75°C

**Questions? Need Answers? Call Us**  
**242-328-8431**

